

CHALET SIROCCO

SWITZERLAND

VERBIER

SIROCCO

VERBIER | Sleeps 8+2 **spa**



COMPLETED IN the autumn of 2014, Sirocco is the spectacular brand new chalet in the Sonalon area of Verbier. Perched high on the side of the mountain the chalet has been finished with immaculate style and elegance. The location is exceptional offering breath-taking views of the surrounding peaks and the valley below.

DESCRIPTION



Completed in the autumn of 2014, Sirocco is the spectacular brand new luxury chalet in the Sonalon area of Verbier. Perched high on the side of the mountain the chalet has been finished with immaculate style and elegance.

The location is exceptional offering breath-taking views of the surrounding peaks and the valley below. A truly astounding chalet, every detail has been taken care of to create the ultimate alpine residence.

This stunning property spans over four floors and sleeps eight people in four luxurious bedrooms. The living and entertaining areas are sumptuous and spacious with plenty of outdoor space to relax in the warmer spring months. The spectacular spa and entertainment zone is spread over the ground floor which offers one of the most luxurious in-chalet spa experiences in the Alps.

You enter the chalet on the first floor onto one of the two sleeping floors. Here you will find the master bedroom which can be made up as a twin or super king. This bedroom has contemporary en-suite bathroom with separate shower. French windows open out onto a spacious terrace from where you can enjoy the

spectacular views. There is a further twin/double bedroom also with an en-suite bathroom and French windows opening out onto the terrace. Both these bedrooms have flat screen TV's (the chalet is equipped with the latest sound and entertainment systems).

Moving upstairs the first floor is home to the wonderful open plan living and dining area. Floor to ceiling French windows open out onto the large wrap-around terrace, the perfect spot to sit back in the warm fur covered chairs and watch the sun go down. In the evening enjoy a glass of champagne in front of the roaring fire whilst the bright lights of Verbier create a spectacular backdrop in the distance. The dining room sits 10 people comfortably. The well-equipped kitchen is closed off allowing maximum privacy whilst you enjoy dinner. Also on this floor is the ski room with heated boot warmers, and a guest toilet.

The top floor has two further bedrooms. One twin/double with an en-suite bathroom and a private balcony. The second bedroom on this floor has a 140cm bed. This bedroom has an en-suite shower room and a small private balcony.

FACILITIES



INTERIOR

- Sleeps 8
- 585 square metres
- 4 Bedrooms
- 7 Individual Beds
- 4 Bathrooms
- 2 Additional WCs
- 10 Dining Table Seats
- 8 Living Area Seats

APPLIANCES

- Wifi
- Apple TV

WELLNESS AND RELAXATION

- Indoor pool
- Hammam/steam room
- Massage treatment room
- Sauna
- Spa
- South facing balcony

ENTERTAINMENT

- Dedicated cinema room
- Wine cave

ADDITIONAL

- Wood burning fireplace
- Private laundry facilities
- Private ski locker
- Cot/high chair available



LAYOUT



SLEEPING FLOOR (TOP FLOOR)

- 1 twin/double bedroom(en-suite bathroom, private balcony)
- 1 double bedroom(en-suite shower room, private balcony)

LIVING FLOOR(2ND FLOOR)

- Open plan living/dining area
- Kitchen
- Guest w.c.

SLEEPING FLOOR (1ST FLOOR)

- 1 twin/double bedroom (en-suite shower room)
- 1 twin/double bedroom (en-suite bathroom with seperate shower)
- Ski room

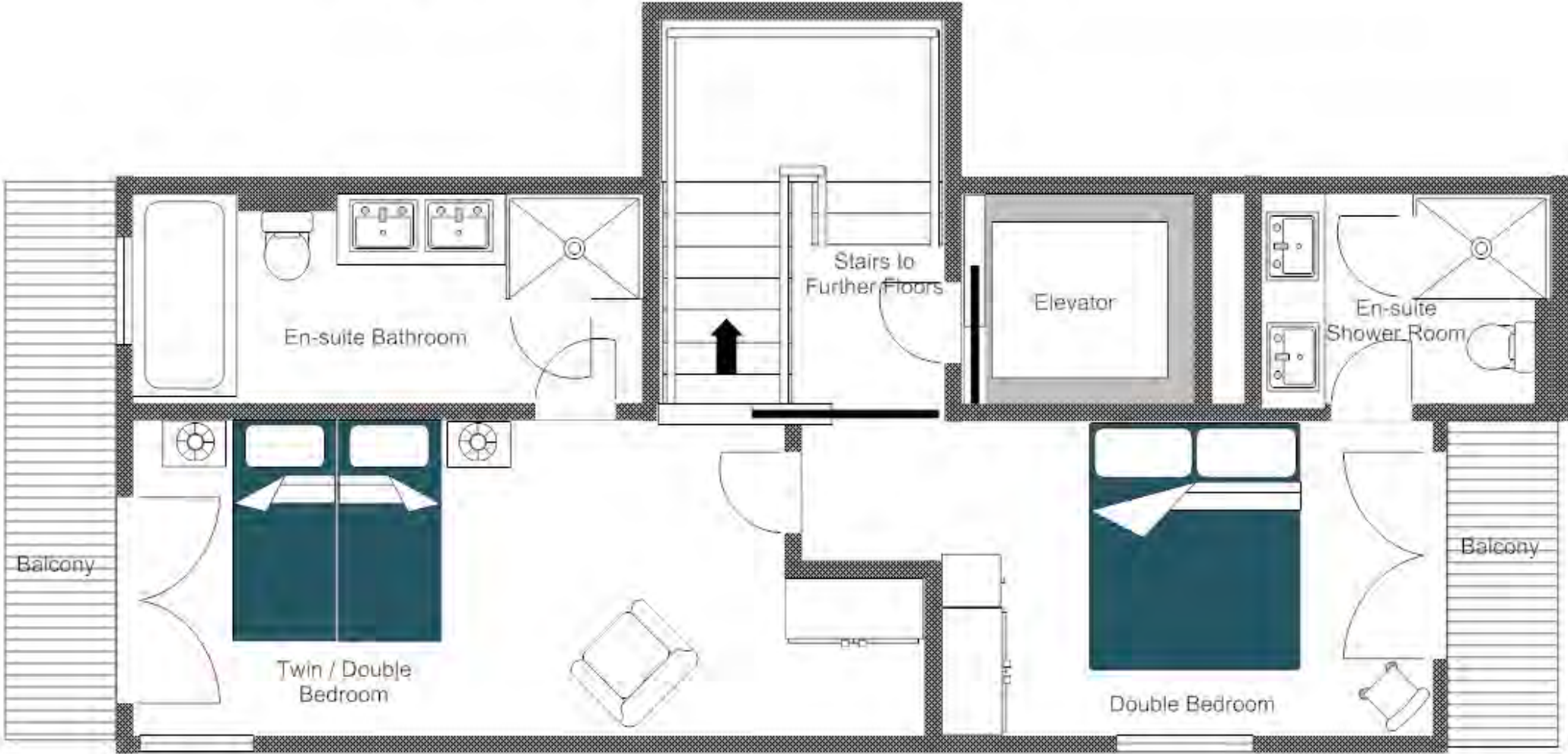
ENTERTAINMENT & SPA FLOOR (GROUND FLOOR)

- Cinema room
- Indoor swimming pool
- Indoor hot tub
- Sauna
- Hammam
- Shower
- Massage room
- Relaxation area
- Wine cave
- Small kitchen/bar area



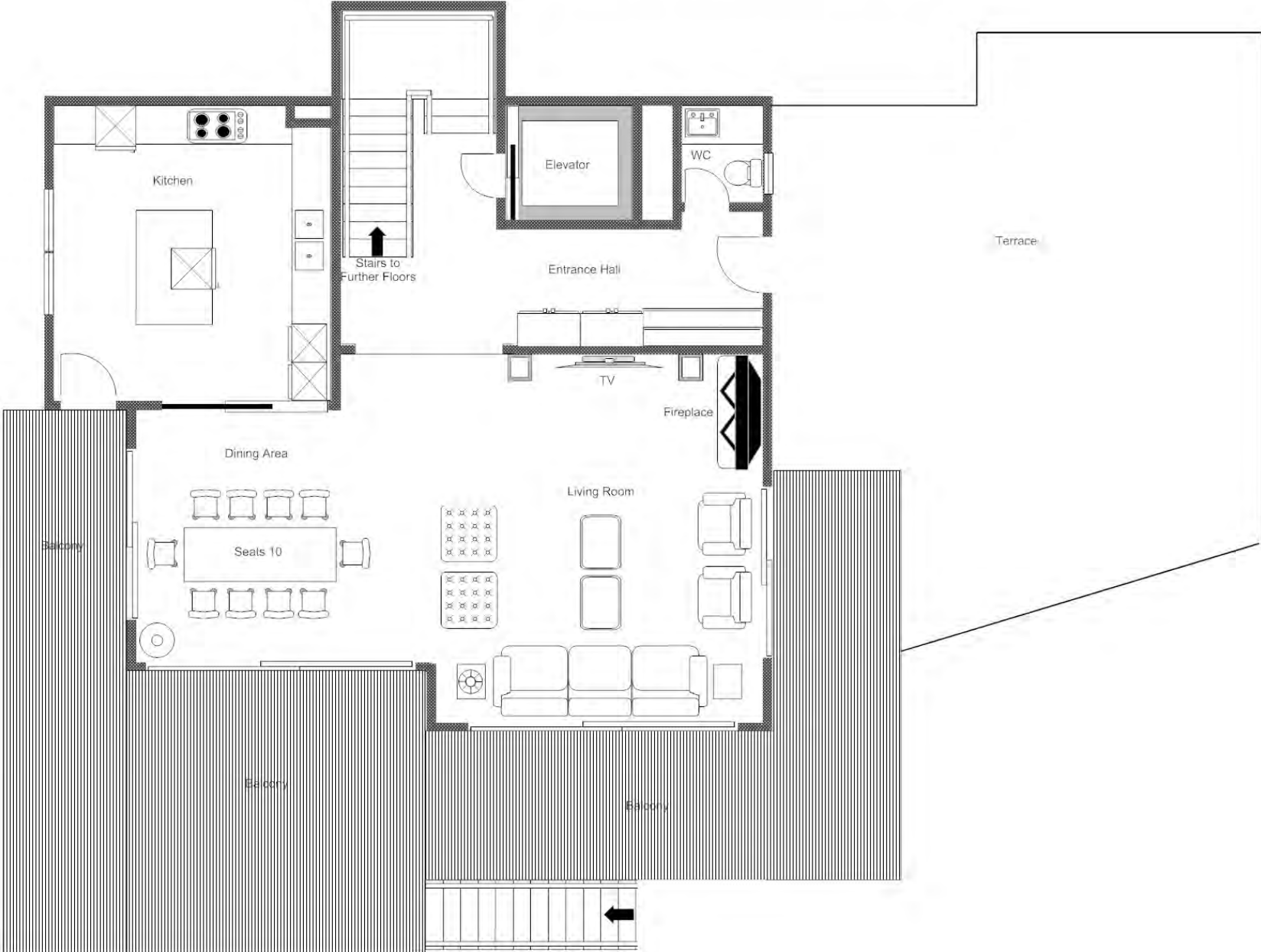
FLOOR PLAN SLEEPING FLOOR (TOP FLOOR)

FOR ILLUSTRATION PURPOSES ONLY



FLOOR PLAN LIVING FLOOR (2ND FLOOR)

FOR ILLUSTRATION PURPOSES ONLY



FLOOR PLAN SLEEPING FLOOR (1ST FLOOR)

FOR ILLUSTRATION PURPOSES ONLY



FLOOR PLAN ENTERTAINMENT AND SPA FLOOR (GROUND FLOOR)

FOR ILLUSTRATION PURPOSES ONLY







LOCATION



Located in the heights of Verbier, near the Sonalon restaurant.

PROXIMITY

Medran - 5 minute drive Savoleyres - 3 minute drive

Place Centrale - 7 minute drive

GOOGLE CO-ORDINATES

46.109145, 7.227613

