

NIDUS PENTHOUSE

AUSTRIA

LECH

NIDUS PENTHOUSE

LECH | Sleeps 10



A STUNNING PENTHOUSE APARTMENT, perfectly
positioned in the heart of Lech

DESCRIPTION



The Nidus Penthouse is one of Lech's most exclusive luxury apartments available to rent. An incredibly chic and stylish property, the Nidus Penthouse occupies a fantastic location, just a short stroll from the nearest lift and close to the centre of the village.

Occupying the top floor of the prestigious Nidus building, the apartment sleeps up to ten people in five bedrooms. Designed and furnished by a leading interior specialist, this beautiful property has been decorated with traditional woods, sumptuous fabrics, and stylish furnishings to create the perfect alpine residence.

The apartment is spread over one floor and the lift opens out directly into the property. There is a large hallway with a stylish seating area and plenty of storage for your winter clothes. The master suite boasts a beautiful double bedroom with its own private dressing area and ensuite bathroom, separate shower, and private sauna. The sauna is perfect for warming up aching muscles after a long day on the slopes.

There are two further twin/double bedrooms which share a private shower room with his 'n hers sinks. A beautiful, alpine-inspired bunk room provides the perfect winter bedroom for children. The children's bunk room shares a shower room with a further twin/double bedroom.

Moving through to the sophisticated living and dining area you will find contemporary furniture and polished oak flooring which create a wonderful ambiance for relaxing and entertaining. Benefitting from the double-height penthouse ceiling, large French windows open out onto the beautiful terrace which looks towards spectacular mountains in the near distance and overlooks the quaint village of Lech. One half of the room is dedicated to the sumptuous living area which is filled with large sofas and stylish seating. There is a large flat screen TV and Apple TV provides plenty of opportunities to catch up on the latest movies. A decorative fireplace and subtle lighting ensure you feel cosy and warm during the snowy winter months.

There is a wonderful, large dining area which can sit up to ten people comfortably. For larger groups, when two apartments are taken in combination, 20 guests can dine together in this apartment. The open plan kitchen overlooks the dining area. When taken on a catered basis, the food is prepared in the professional kitchen located in the lower floor of the property and then served by the hosts in the comfort of your own apartment.

Guests have access to a wonderful shared ski room complete with boot warmers.

The luxury Lech chalet is sold on a catered, self-catered, BnB or accommodation only basis.

The chalet normally has a shared driving service from 8:30am – 1:00am when sold on a fully catered basis. For those self-driving, the apartment has an underground parking space available upon request.

INTERIOR

- Sleeps 10
- 211 Square metres
- 5 Bedrooms
- 9 Individual beds
- 3 Bathrooms
- 1 Additional WCs
- 12 Dining table seats
- 10 Living area seats

APPLIANCES

- Apple TV
- Wifi

WELLNESS AND RELAXATION

- Sauna

ADDITIONAL

- Corporate chalets
- Cot/high chair available
- Family-friendly chalets
- Heated boot warmers
- Private laundry facilities
- Shared ski locker
- Indoor Parking: 1



LAYOUT

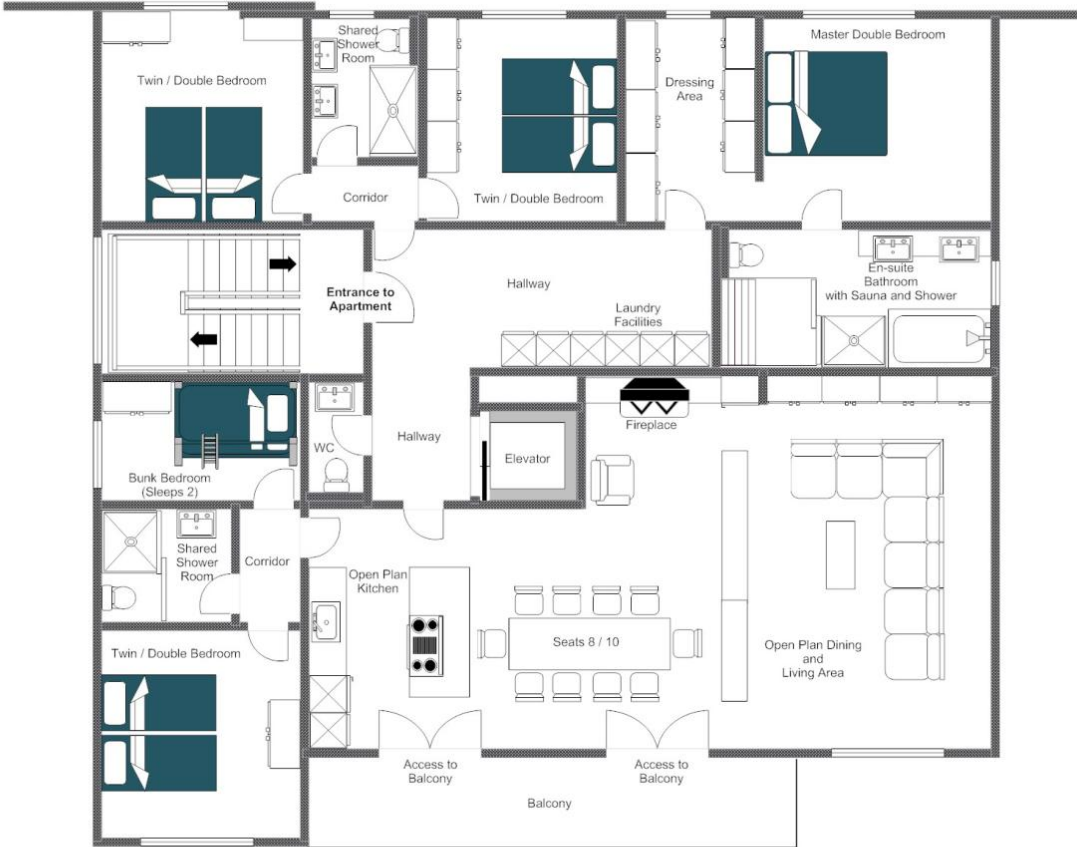


THIRD FLOOR

- Open plan living and dining room and kitchen
- 1 master double bedroom (en-suite bathroom with separate shower and sauna, TV, safe, dressing area)
- 1 twin/double bedroom (TV, safe)
- 1 twin/double bedroom (TV, safe)
- 1 shared shower room
- 1 twin/double bedroom (TV, safe)
- 1 shared shower room
- 1 children's bunk room (sleeping 2)
- Guest WC



APARTMENT NIDUS, PENTHOUSE - FOR ILLUSTRATION PURPOSES ONLY





LOCATION



PROXIMITY

Schlosskopf chairlift - 6-minute walk Schlegelkopf lift - 10-minute walk

Village centre - 10-minute walk/3-minute drive/bus-ride (there is a bus stop located 1-minute walk from Nidus entrance)

GOOGLE CO-ORDINATES

47.214837, 10.148945





