

CHALET FACE À FACE

FRANCE

VAL D'ISÈRE

CHALET FACE À FACE

VAL D'ISÈRE | Sleeps 12+2 spa



CHALET FACE À FACE is a sensational blend of traditional alpine-inspired architecture and stunning interior design, offering incredible views from a ski-in/ski-out location

DESCRIPTION



A beautiful six-bedroom residence perfectly positioned directly next to the slopes of the iconic French ski resort of Val d'Isère. Located just a 15-minute walk or 5-minute chauffeured drive to the centre of the village, the chalet's lofty position affords superb mountain views.

This breath-taking property has been thoughtfully renovated over the last year. A fairy-tale hideaway, the owners have taken careful consideration of local architecture and authentic alpine-inspired furnishings. Chalet Face à Face is a unique and sumptuous property, where the level of craftsmanship throughout is second to none.

This luxury Val d'Isère chalet sleeps up to 14 guests, making it the perfect, spacious retreat for families and friends.

You enter the chalet on the ground floor. There is a large hallway and ski room, with plenty of storage for skis and boots and outdoor gear. You will also find boot warmers here, ensuring your boots are toasty for a day exploring the slopes.

On this floor, there are two beautifully designed twin/double bedrooms, ensuring maximum comfort. The first of the bedrooms has an en-suite bathroom. The second bedroom has an en-suite shower room. There is also a guest WC on this floor, plus a laundry room.

Moving down to the lower ground floor, where one of the highlights of the chalet is found, a tranquil spa area. With a small indoor swimming pool, steam shower, sauna plus massage and yoga area, the spa is the ideal place to indulge in some well-earned self-care. It has been beautifully finished with a combination of aged wood and stone, creating a haven of relaxation.

Also located on this floor is the dedicated cinema room with a massive flat screen smart TV, state-of-the-art system and surround sound.

Taking the stairs to the first floor, you will find the main sleeping floor, home to four bedrooms. It is here that you will find the master bedroom and an en-suite bathroom with separate shower. The floor-to-ceiling windows ensure the room is filled with light and allow you to soak up the sublime views of La Face that the chalet has to offer from the comfort of your bed.

There are a further two twin/double bedrooms on this floor, both with en-suite shower rooms. These three bedrooms all have access to the shared terrace, home to a large hot tub with incredible views of the peaks across the valley. The final bedroom on this floor is a cosy children's quad bunk room (bed size 80x190cm), perfect for children, with a shower and sink within the room, and a shared separate toilet just across the landing.

The chalet's stunning open-plan kitchen, living and dining area is located on the top floor. This beautiful room has been designed to create a welcoming, warm and relaxing entertainment space, combining striking interior architecture with chic furniture and fabrics. With its 5-meter-high cathedral-like ceiling, exposed beams and double-height windows, the living area has the wow factor. Add to that the contemporary hanging fireplace and sumptuous furnishings, it raises the bar of alpine living.

The dining area is a fabulous setting for elegant evening meals, with statement pendant lighting and a large dining table that can seat 10 guests. The break-taking views of the snow-cloaked mountains and the village are best enjoyed from the balcony off the living area. The well-equipped open-plan kitchen overlooks the dining area, where, when booked on a catered basis, your chef will prepare delicious meals.

Finally, there is a mezzanine floor sitting above the open plan living area, that is home to a cosy TV snug. This is the perfect spot for the children to enjoy a movie night after dinner on the large, comfy beanbags dotted around the floor.

FACILITIES



INTERIOR

- Sleeps 12 + 2
- 380 Square metres
- 6 Bedrooms
- 13 Individual beds
- 6 Bathrooms
- 2 Additional WCs
- 10 Dining table seats
- 9 Living area seats

APPLIANCES

- Blue ray
- Smart TV
- Wifi

WELLNESS AND RELAXATION

- Balconies
- Hammam/steam room
- Indoor pool
- Massage treatment room
- Outdoor hot tub
- Sauna
- Spa

ENTERTAINMENT

- Dedicated cinema room
- TV snug

ADDITIONAL

- Cot/high chair available
- Family-friendly chalets
- Heated boot warmers
- Private laundry facilities
- Ski-in & Ski-out
- Wood burning fireplace





LAYOUT



MEZZANINE FLOOR

- TV Room (Smart TV)

TOP FLOOR

- Open plan kitchen, living and dining area (Smart TV)

FIRST FLOOR

- Master double bedroom (en-suite bathroom with separate shower)
- 1 Twin/Double bedroom (en-suite shower room)
- 1 Twin/Double bedroom (en-suite shower room)
- 1 quad bunk bedroom (bed size 80x190, built-in shower and sink)
- Guest WC

GROUND FLOOR

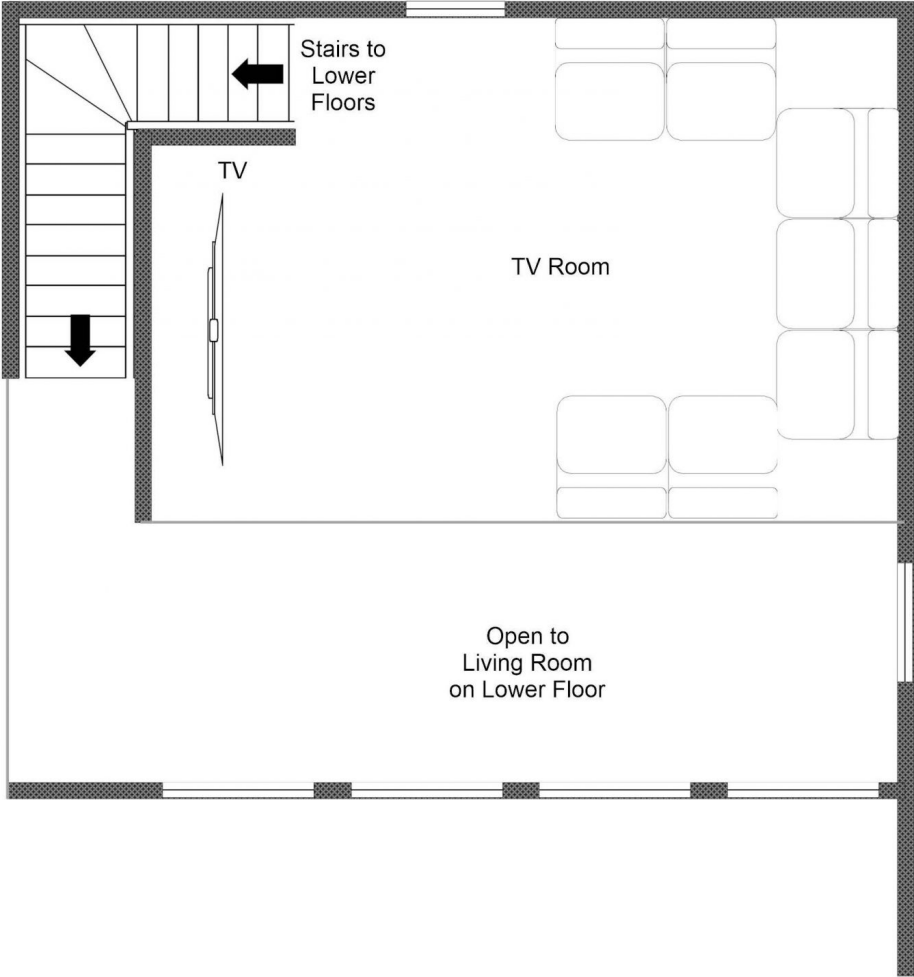
- 1 Twin/Double bedroom (en-suite bathroom with separate shower)
- 1 Twin/Double bedroom (en-suite shower room)
- Ski room
- Laundry room
- Garage
- Guest WC

LOWER GROUND FLOOR

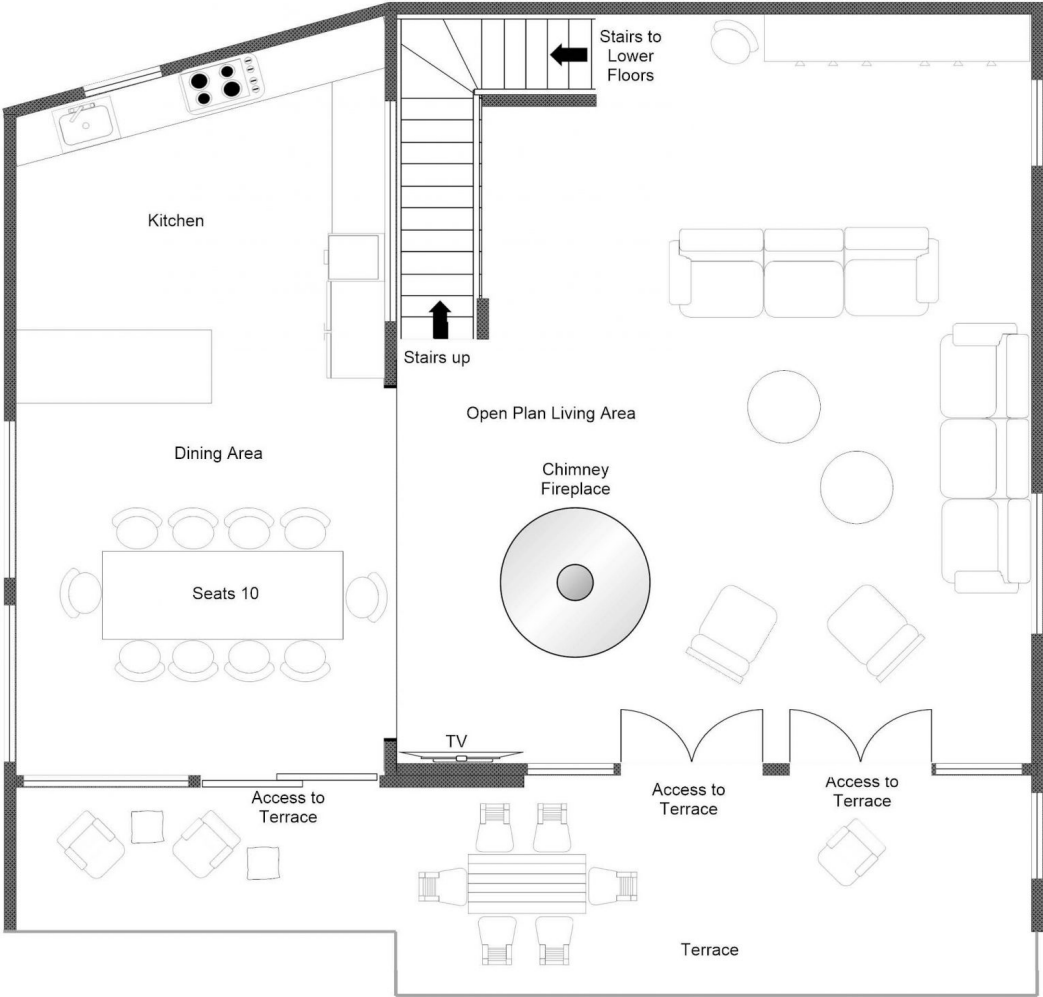
- Indoor Swimming pool
- Hammam
- Sauna
- Massage and Yoga room
- Cinema room



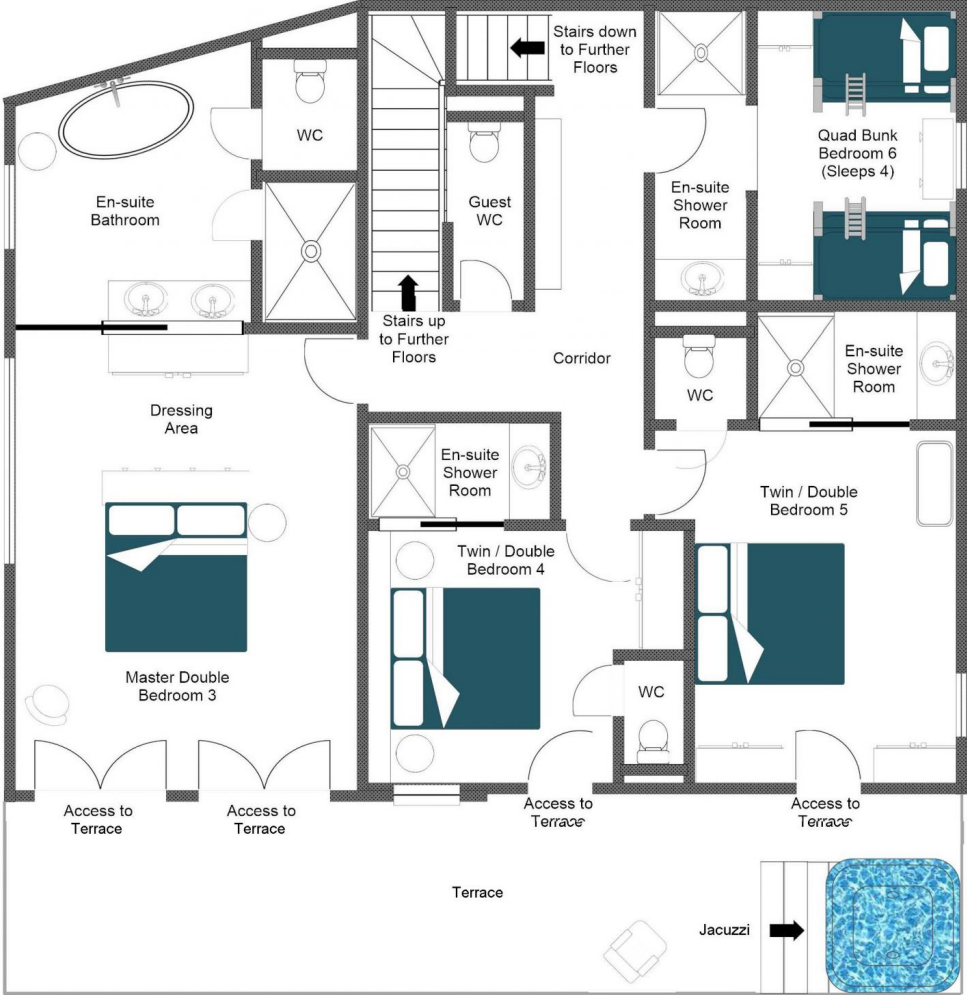
**CHALET FACE À FACE, TOP FLOOR
FOR ILLUSTRATION PURPOSES ONLY**



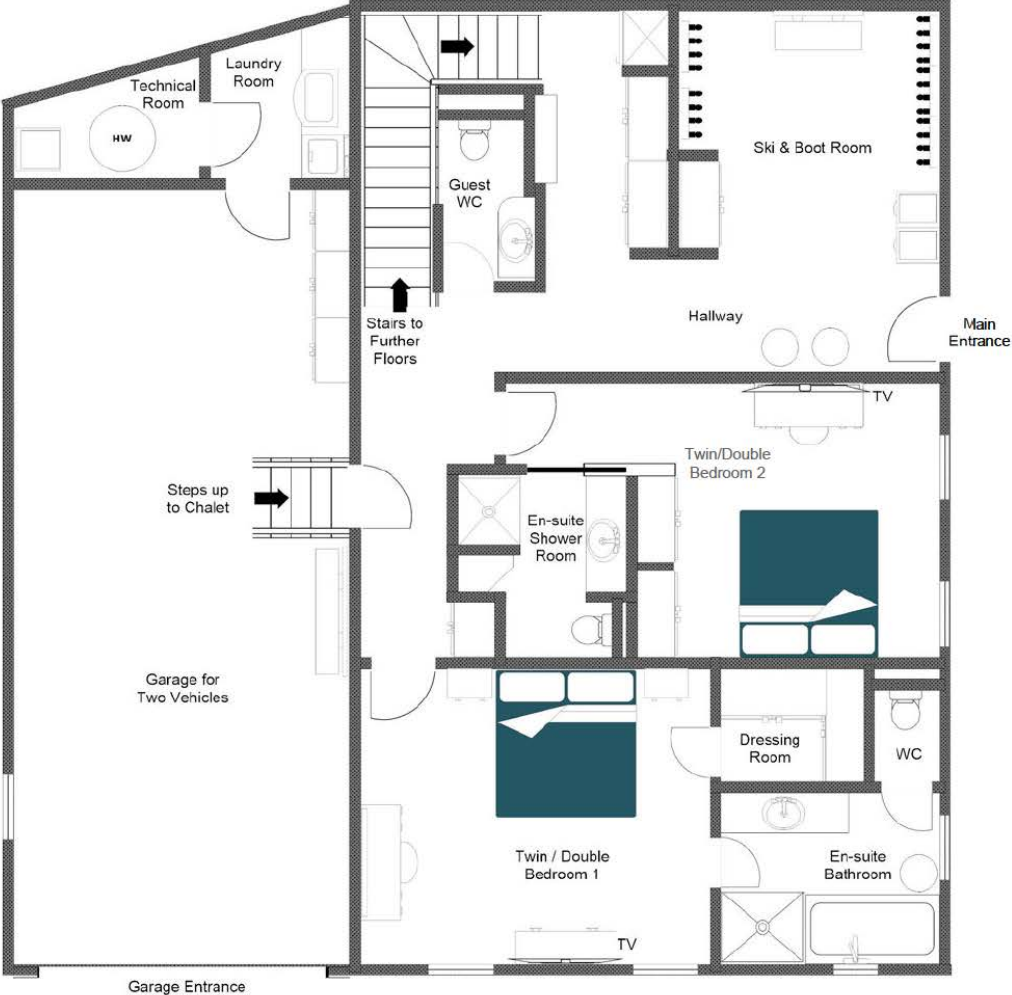
CHALET FACE À FACE, SECOND FLOOR
FOR ILLUSTRATION PURPOSES ONLY



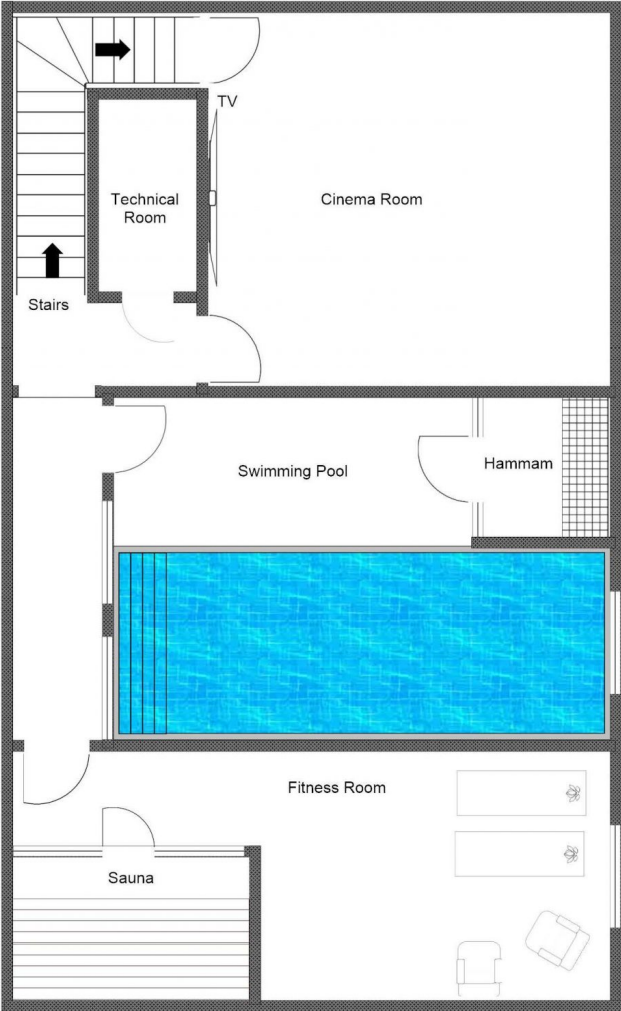
CHALET FACE À FACE, FIRST FLOOR
FOR ILLUSTRATION PURPOSES ONLY



CHALET FACE À FACE, GROUND FLOOR
FOR ILLUSTRATION PURPOSES ONLY



CHALET FACE À FACE, LOWER GROUND FLOOR
FOR ILLUSTRATION PURPOSES ONLY





LOCATION



PROXIMITY

Solaise ski lift - 10-minute walk

Village centre – 5-minute drive or 15-minute walk

GOOGLE CO-ORDINATES

45.441363, 6.977527









