

CHALET ALPIN ROC

SWITZERLAND

VERBIER

CHALET ALPIN ROC

VERBIER | Sleeps 8 **spa**



LOCATED IN THE SONALON AREA, nestling in the heights of Verbier, this chalet's elevated position affords it breathtaking views of the surrounding mountains and the village below. This stunning brand new chalet is set out over three floors, sleeping eight guests in four bedrooms.

DESCRIPTION



Located in the Sonalou area, nestling in the heights of Verbier, this chalet's elevated position affords it breath-taking views of the surrounding mountains and the village below. This stunning brand new chalet is set out over three floors, sleeping eight guests in four bedrooms.

The wonderfully bright open plan living and dining area is the height of alpine chic. Old wood and natural stones have been successfully combined with contemporary Italian furnishings and Swiss detailing to beautiful effect. The modern open plan kitchen is well equipped to cater for the most sophisticated dinner party.

Alpin Roc is a true gem, lounge with your favourite tippie in front of a roaring fire or watch the sun set over the mountains from the outdoor hot tub.

On the ground floor is located a garage, with parking for one vehicle (with a further three exterior parking spaces); a boot room, with boot heaters; and a laundry area.

The first floor contains three of the four bedrooms. The master bedroom with en-suite bathroom and separate toilet is located at the front of the property. Also on this floor is a double bedroom (beds can be converted to twins); and a children's bunk room, with wonderful handmade beds and skylight window (sleeping two). Two of these bedrooms share a shower room with a toilet (the shower room doubles as a Hammam). The front two bedrooms have access to the balcony.

The open plan living/dining and kitchen are located on the second floor along with a further twin/double bedroom and separate shower room.

A large mezzanine area above the main living area has been set aside as a chill out space and TV room with low comfortable sofas.

FACILITIES



INTERIOR

- Sleeps 8
- 250 square metres
- 4 Bedrooms
- 7 Individual Beds
- 3 Bathrooms
- 8 Dining Table Seats
- 6 Living Area Seats

APPLIANCES

- TV/DVD
- Hi-Fi/CD player/MP3 player
- Wifi

WELLNESS AND RELAXATION

- Outdoor hot-tub
- Hammam/steam room
- Spa

ENTERTAINMENT

- TV/games room

ADDITIONAL

- Private laundry facilities
- Private ski locker
- Cot/high chair available



LAYOUT



MEZZANINE

- TV area/chill out zone

SECOND FLOOR

- Open plan living/dining room
- Open plan kitchen
- Balcony with outdoor hot tub
- Separate shower room with toilet
- 1 twin bedroom

FIRST FLOOR

- 1 children's bunk room (sleeps 2)
- 1 double/twin bedroom (balcony access)
- 1 double bedroom (en-suite bathroom, balcony access)
- Shower room with toilet (doubles as Hammam)

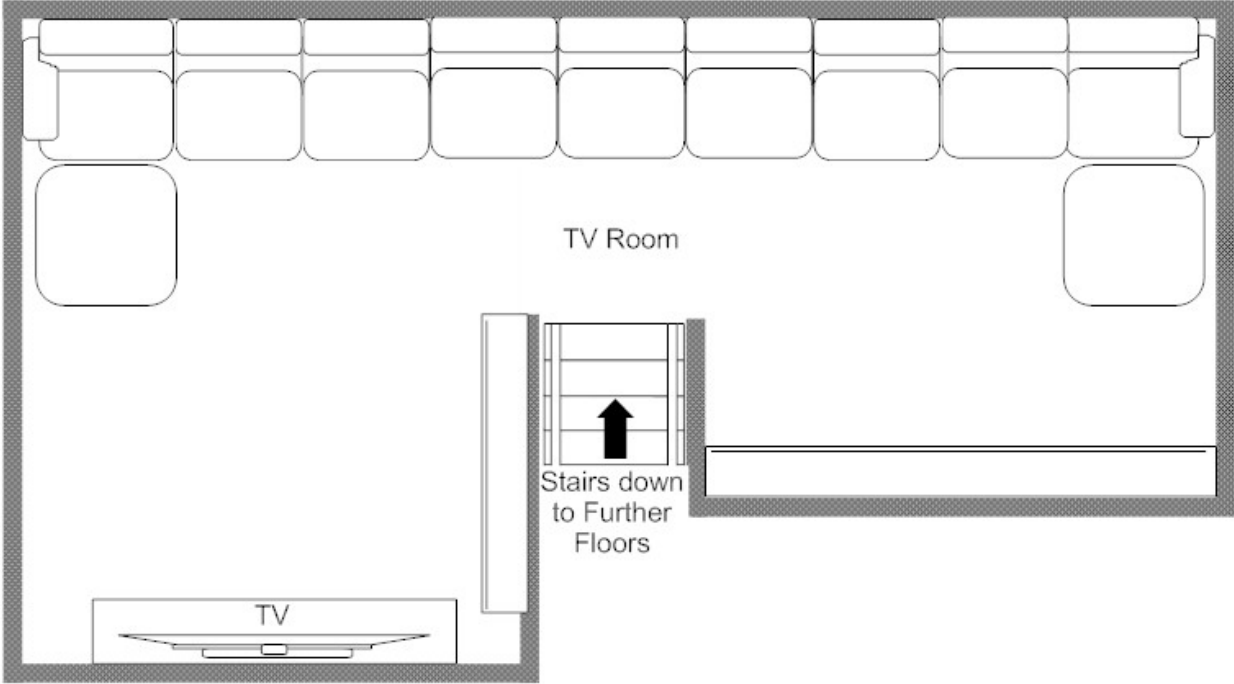
GROUND FLOOR

- Ski room with boot heaters
- Garage
- Laundry area



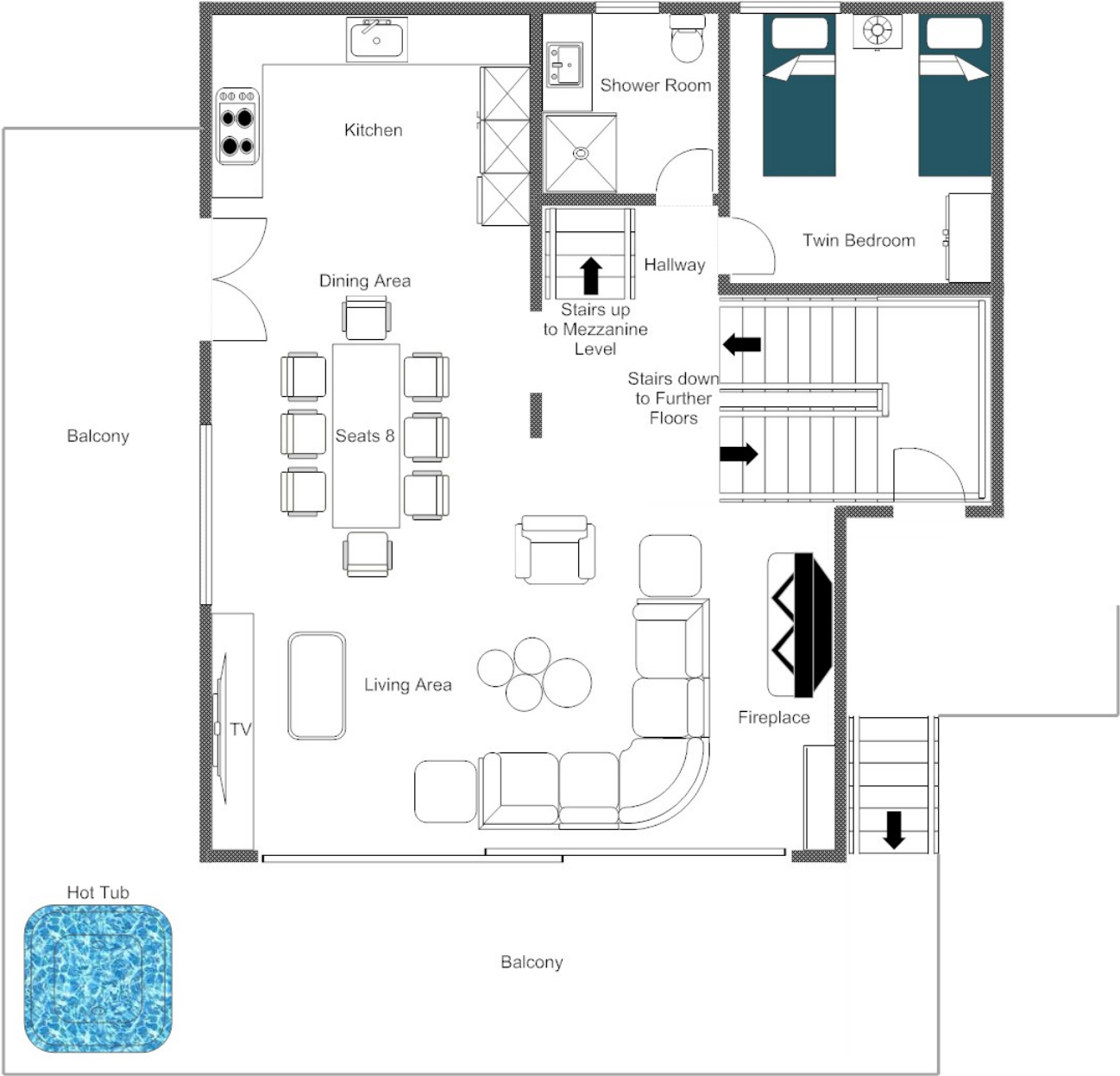
FLOOR PLAN MEZZANINE

FOR ILLUSTRATION PURPOSES ONLY



FLOOR PLAN SECOND FLOOR

FOR ILLUSTRATION PURPOSES ONLY



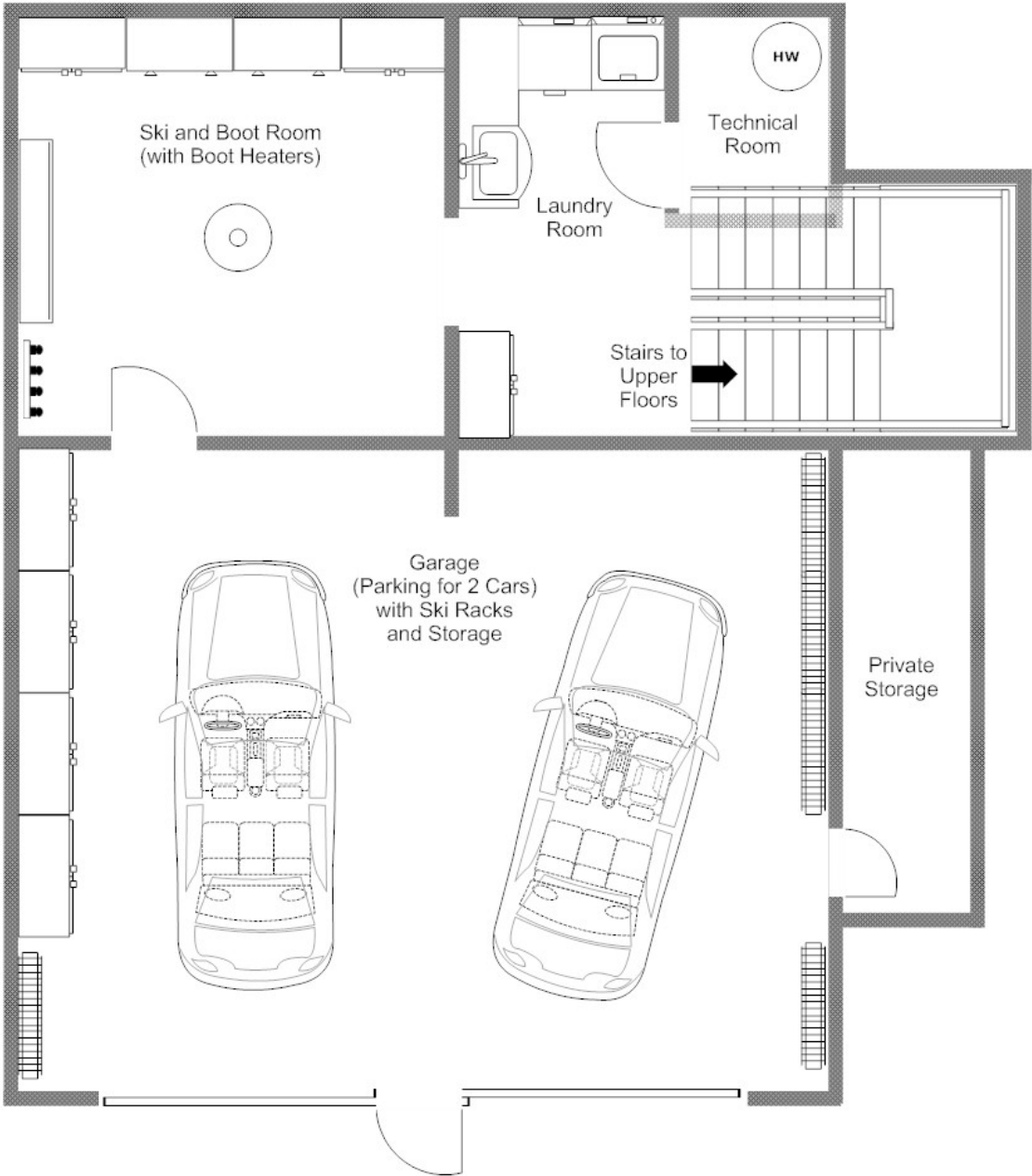
FLOOR PLAN FIRST FLOOR

FOR ILLUSTRATION PURPOSES ONLY



FLOOR PLAN GROUND FLOOR

FOR ILLUSTRATION PURPOSES ONLY







LOCATION



Located in the heights of Verbier, near the Sonalon restaurant.

ADDRESS

Chalet Alpin Roc

Route de la Marlène , Verbier , 1936

PROXIMITY

Carrefour shuttle departs every 30 minutes from outside the chalet.

Savoleyres shuttle is 50m from the chalet and departs every 30 minutes.

Medran - 5 minute drive Savoleyres - 3 minute drive

Place Centrale - 7 minute drive

GOOGLE CO-ORDINATES

46.108356167617465, 7.226039526855402

