

CHALECH 4

---

AUSTRIA

LECH

# CHALECH 4

LECH | Sleeps 12+2 spa



A SUPERB CHALET, close to the ski lifts and with fantastic spa facilities, including hared indoor swimming pool and gym



# DESCRIPTION





Chalech 4 is one of five exquisite new homes in the prestigious Chalech development, located just a 10-minute walk to the centre of charming Lech, and only a few minutes' walk from the nearest ski lift. This stunning new complex is in keeping with the refined spirit of Lech and is a wonderful addition to the one of the world's most sophisticated ski resorts.

The apartment itself has been designed with immaculate attention to detail. It sleeps up to 14 people in six stunning bedrooms, and features a sauna and a hammam, as well as shared access to the complex's indoor swimming pool, tepidarium and gym. It is an ideal escape for a couple of families or a group of friends seeking high end accommodation, with fantastic wellness facilities, in a convenient location.

Chalech 4 is spread over three floors, all accessed by stairs as well as a lift. At the top level is the main living area. An open plan lounge, dining and kitchen occupy most of the space. Clean lines and sharp edges create a rather masculine aesthetic which is warmed by rich textiles and vibrant finishings. A luxurious green velvet sofa presides over the living room, the perfect spot to recline at the end of the day, feasting on fantastic alpine views through floor to ceiling windows. The village of Lech lies in the foreground, beautifully illuminated by night, with a surreal mountain landscape as backdrop. Wonderful light spills into the room through the day and guests can step out onto the terrace to enjoy the sunshine in the warmer spring months. In the corner of the living area is a wood-burning stove which completes the scene for perfect post-ski relaxation.

Adjoining the living space is the dining area. The dining table seats fourteen guests comfortably. Overlooking this space is a sleek and modern kitchen which is equipped with all the essentials for preparing food and offer plenty of storage space.

The top floor is also home to the master en-suite bedroom, a luxurious room which enjoys a stand-alone tub in the centre of the room as well as a generous shower and his 'n hers sinks. There is a separate WC which can be accessed from both the bedroom and the hallway.

Going down one floor, you'll find three spacious double bedrooms, each with a unique design twist. All three bedrooms are en-suite with shower rooms however one has a bath too. The other two bedrooms have access to a shared balcony. All three have mounted TVs and large cupboards.

On the lower floor you will find a find two more bedrooms, the media room and the sumptuous spa area. One of the bedrooms is a double bedroom with an en-suite bathroom and a separate shower. Again, this room has a TV and ample cupboard space. The final bedroom is a quad bunk room. A dedicated shower room is located next door. A cosy media room, with comfy L-shaped sofa and large screen TV, as well as a fridge, makes an excellent place for the ski-weary kids to retreat to at the end of the day or for all the family to indulge in some movie time.

Finally there is the beautiful spa area, a wonderful highlight of this spectacular property. Boasting a sauna and a hammam, as well as a relaxation area, this zen space is the answer for weary muscles or simply for those wanting to rejuvenate mind and body. Or guests can push themselves further with a work out in the shared gym or with some lengths in the shared pool found in the basement of the building.

The apartment also has access to a shared ski room with private ski lockers.



# FACILITIES





## INTERIOR

- Sleeps 12 + 2
- 379 Square metres
- 6 Bedrooms
- 9 Individual beds
- 6 Bathrooms
- 1 Additional WCs
- 14 Dining table seats

## APPLIANCES

- TV
- Sonos
- Wifi

## WELLNESS AND RELAXATION

- Hammam/steam room
- Sauna
- Shared access to gym
- Shared access to pool
- Spa

## ENTERTAINMENT

- TV room

## ADDITIONAL

- Cot/high chair available
- Heated boot warmers
- Shared ski locker
- Wood burning fireplace
- Indoor Parking: 2
- Indoor Parking: 2









# LAYOUT





## GROUND FLOOR

- 1 double bedroom (en-suite bathroom with separate shower)
- 1 quad bunk room (sleeping 4)
- Shower room and WC
- Media room
- Spa
- Sauna
- Hammam
- Shower

## FIRST FLOOR

- 1 double bedroom (en-suite bathroom with separate shower)
- 1 double bedroom (en-suite shower room, terrace access)
- 1 double bedroom (en-suite shower room, terrace access)

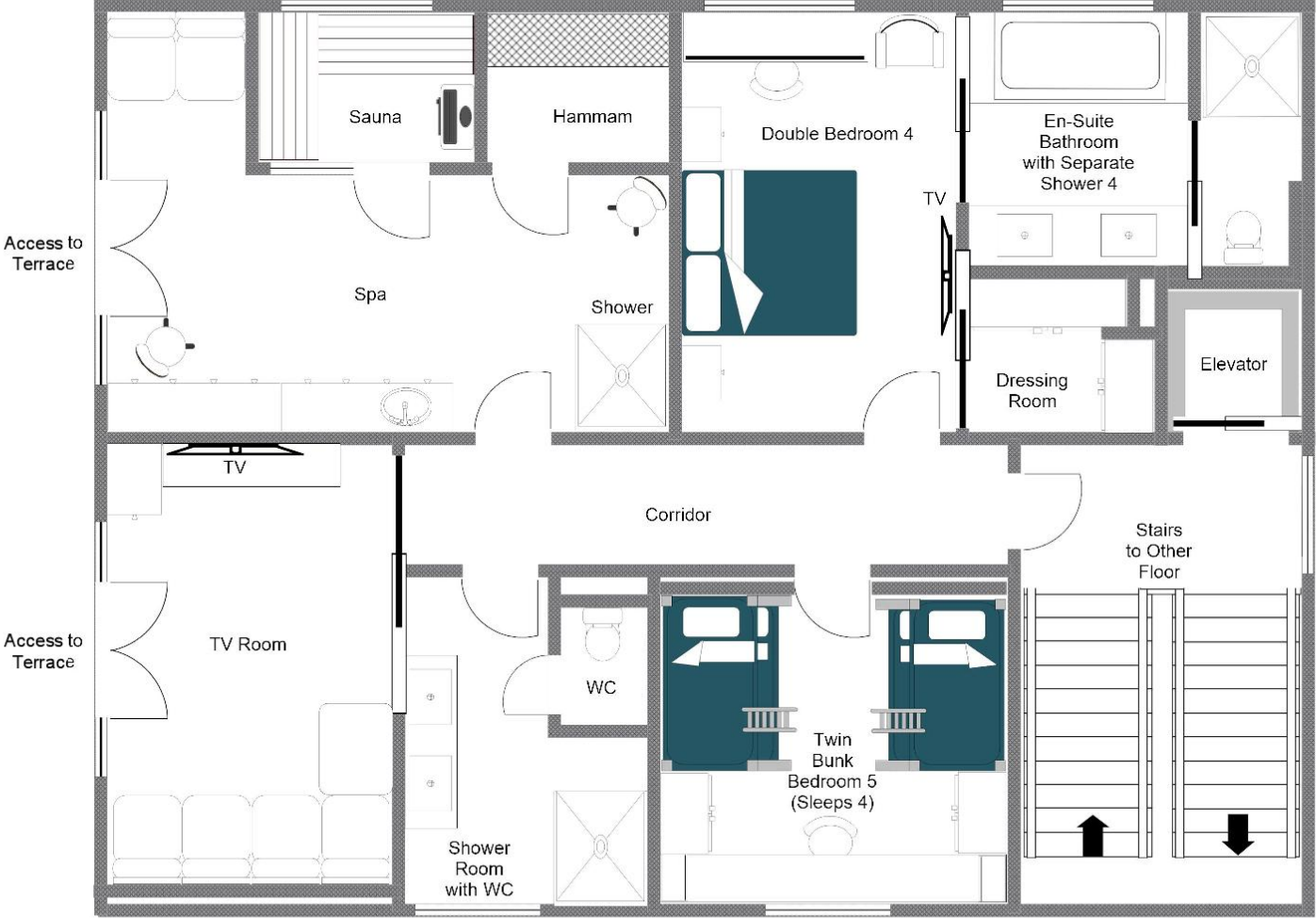
## TOP FLOOR

- Open plan kitchen, dining and living room
- 1 double bedroom (open plan bathroom with separate shower)
- WC
- Balcony

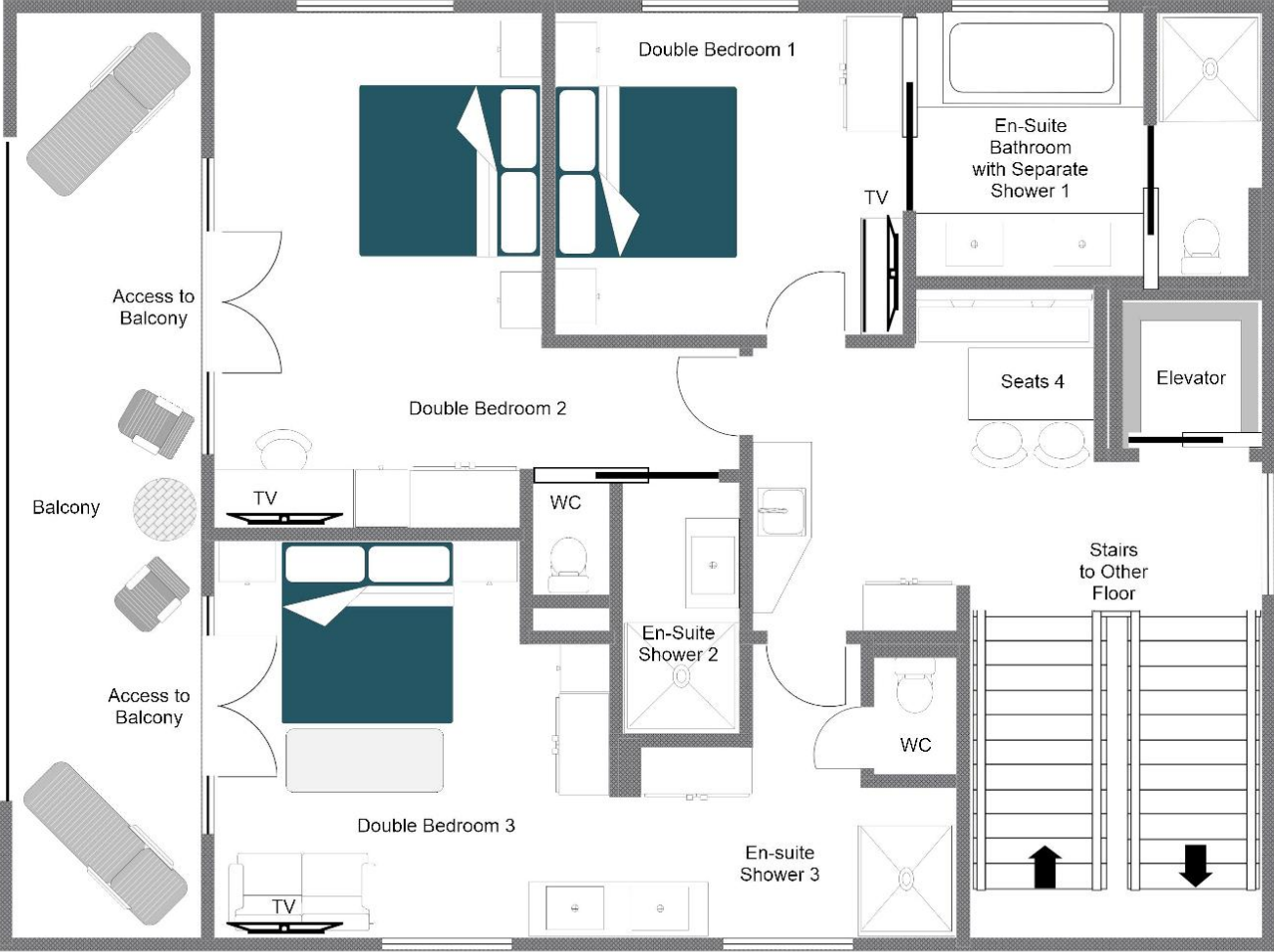




CHALECH 4, GROUND FLOOR  
FOR ILLUSTRATION PURPOSES ONLY

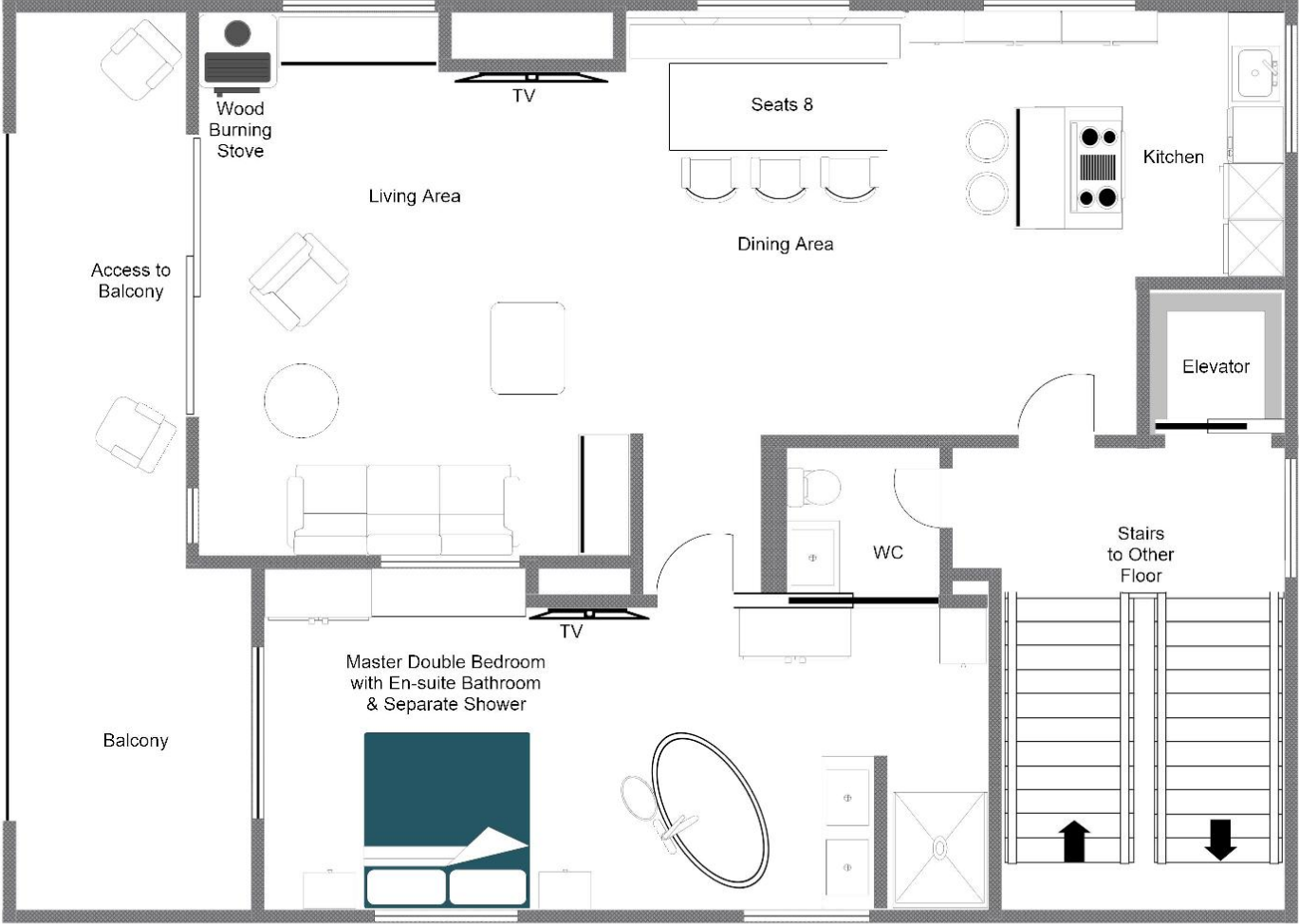


CHALECH 4, FIRST FLOOR  
FOR ILLUSTRATION PURPOSES ONLY





CHALECH 4, TOP FLOOR  
FOR ILLUSTRATION PURPOSES ONLY









# LOCATION





## PROXIMITY

Schlosskopf chairlift - 3-minute walk Schlegelkopf lift - 15-minute walk

Village centre - 10-minute walk or a 3-minute drive

## GOOGLE CO-ORDINATES

47.214795, 10.147952









