

BRUNNENHOF 5

AUSTRIA

LECH

BRUNNENHOF 5

LECH | Sleeps 6 **spa**



A CHIC NEW LUXURY apartment in the heart of Lech with outstanding shared facilities, including a swimming pool, sauna and hammam

DESCRIPTION



We are excited to introduce the newly completed Brunnenhof Residence, one of Lech's most exciting new developments and the latest addition to our Lech portfolio. The building has been completely renovated to the highest standards with 14 beautiful apartments. The residence houses incredible shared facilities, including a stunning indoor swimming pool, spa, hammam and sauna.

Brunnenhof Apartment 5, sleeping six guests in three beautifully decorated bedrooms, is an ideal base for an unforgettable skiing trip for friends or family sharing. The apartments encompasses chic, modern finishes with calming azure hues and textures. Morning light floods the lounge and dining area for a perfect breakfast spread, then the fireplace offers a warm and cosy homecoming before heading out into town to sample some of Lech's finest restaurants. This mountain retreat is the ideal base for keen skiers with the closest lift, the Schlosskopf chairlift, only a six-minute walk away. Lech is a charming mountain village superb skiing and a sophisticated social scene.

This beautiful second floor Lech apartment comprises of two spacious en-suite double bedrooms, plus a deluxe master bedroom with an en-suite bathroom and separate shower. This master bedroom also boasts access to the panoramic terrace with awe inspiring views of the surrounding mountains.

The open plan kitchen/dining and living area is a stylish and sociable space, perfectly suited to relaxing in after a long day on the slopes. The space is flooded with light through the floor to ceiling windows that lead out to the balcony where you can drink up the mountain views with a glass of champagne. The fully equipped kitchen provides everything you may need to create your home from home mountain experience.

The apartment is ideally located only a ten-minute walk from the centre of the village and six-minute walk from the nearest lift, that will whisk you up and onto the slopes. The apartment includes one parking space.

All this, combined with luxurious shared spa and pool facilities, mean that the apartment has something for even the most discerning guest.

The apartment can be taken on a self-catered, B&B or accommodation only basis and guests can enjoy the renowned Bramble Ski Residence Concierge Service who will take care of all the finer details of your stay from restaurant reservations, to pre-ordered lift passes on arrival.

FACILITIES



INTERIOR

- Sleeps 6
- 98 Square metres
- 3 Bedrooms
- 3 Individual beds
- 3 Bathrooms
- 6 Dining table seats
- 6 Living area seats

APPLIANCES

- TV
- Wifi

WELLNESS AND RELAXATION

- Shared access to Hammam
- Shared access to pool
- Shared access to sauna
- Spa
- Terrace

ADDITIONAL

- Cot/high chair available
- Family-friendly chalets
- Shared laundry facilities
- Shared ski locker





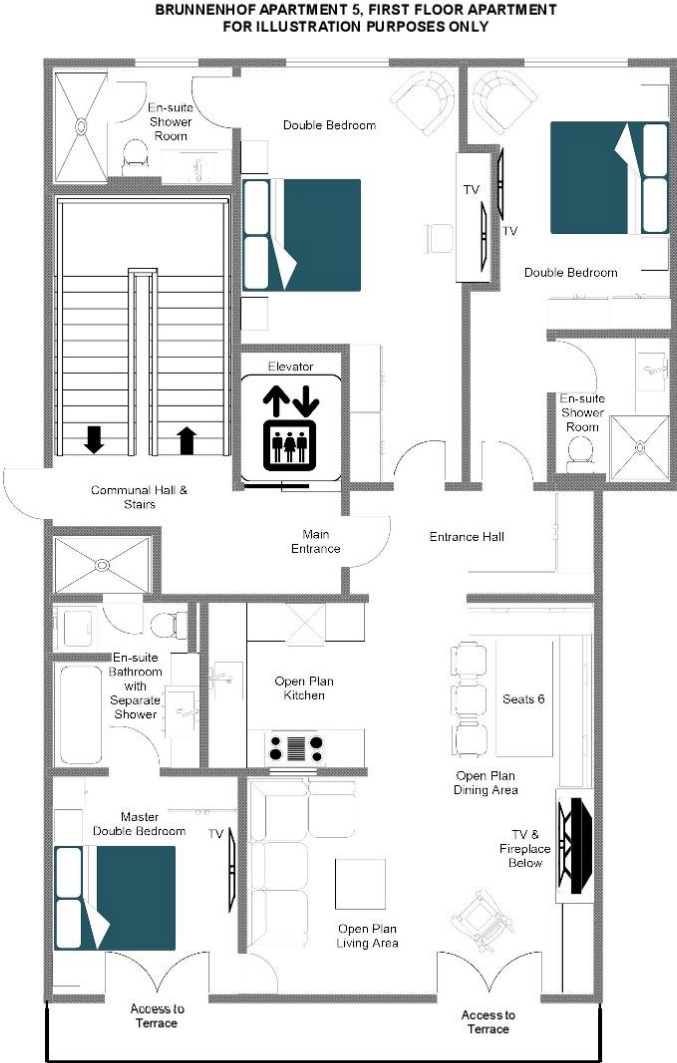
LAYOUT



FIRST FLOOR

- Open plan kitchen/dining and living area
- 1 master bedroom (en-suite bathroom with separate shower, terrace)
- 1 double bedroom (en-suite shower room)
- 1 double bedroom (en-suite shower room)







LOCATION



PROXIMITY

Schlosskopf chairlift - 6-minute walk
Schleggelkopf chairlift - 12-minute walk

Village centre - 10-minute walk or a 3-minute drive

GOOGLE CO-ORDINATES

47.215991, 10.148279





