

BRUNNENHOF 4

---

AUSTRIA

LECH

# BRUNNENHOF 4

LECH, AUSTRIA | Sleeps 4 + 4 | SPA



BRUNNENHOF 4 is a stylish alpine apartment in the charming village of Lech.

# DESCRIPTION



We are thrilled to introduce the brand new Brunnenhof residence, one of Lech's most exciting new developments. This beautiful five-story building is located near to the centre of the charming village of Lech. The building has undergone a complete renovation over the last year and is now home to 14 chic new apartments. The residence also boasts fabulous shared facilities, including an indoor swimming pool, spa, hammam, sauna and a treatment room.

Brunnenhof 4 is part of this incredible new development. Sleeping four adults and four children in three stunning bedrooms, this first floor apartment is ideally located only a short stroll from the ski lift and centre of the village. Lech is a charismatic village which safeguards its traditions and has a timeless charm and sophistication, not to mention, sublime skiing. This apartment is the ideal base for families with the closest lift, the Schlosskopf chairlift, only minutes away.

The apartment is spread over one elegant floor. The open plan living, dining and kitchen is the ideal arrangement for social evenings around the wide dinner table or relaxing with your favourite après ski drink. The dining table comfortably seats eight guests, with banquette seating along two sides - ideal for children. Decorated in tranquil, muted tones with rich textures, the living area has a large corner sofa and there is an electric fire, adding to the welcoming atmosphere of the room. A tasteful selection of old photographs on the wall, paying homage to the history of skiing in the Arlberg, lends a wonderful sense of history and character to the room. The open kitchen is modern, finished in dark greys, and is complete with all the equipment needed for memorable evenings dining in. Combined with the wonderful shared facilities, this apartment has something for everyone and is the ideal ski base in Lech.

The beautiful master bedroom has an en-suite bathroom. It also has paned sliding doors leading out to a balcony offering fantastic views and providing plenty of natural light to warm the room. There is a further twin/double bedroom and one cosy quad bunk room for children, sleeping up to four. These bedrooms have a separate shower room each, located just across the hallway from the rooms. All the bedrooms have their own mounted TVs.

Brunnenhof 4 is ideally located only a ten-minute walk from the centre of the village and a six-minute walk from the nearest lift, that will take you up and onto the slopes within minutes. If you are an experienced skier, you can ski back to the apartment, as it is located only a few hundred metres from the piste.

The apartment can be taken on a self-catered, BnB or accommodation only basis.

# FACILITIES



## INTERIOR

- Sleeps 4 + 4
- 97 Square metres
- 3 Bedrooms
- 7 Individual beds
- 3 Bathrooms
- 8 Dining table seats
- 6 Living area seats

## APPLIANCES

- TV/DVD
- Wifi

## WELLNESS AND RELAXATION

- Shared access to hammam
- Shared access to pool
- Shared access to sauna
- Spa

## ADDITIONAL

- Cot/high chair available
- Shared ski locker
- Family-friendly chalets
- Indoor Parking: 0
- Outdoor Parking: 0



# LAYOUT





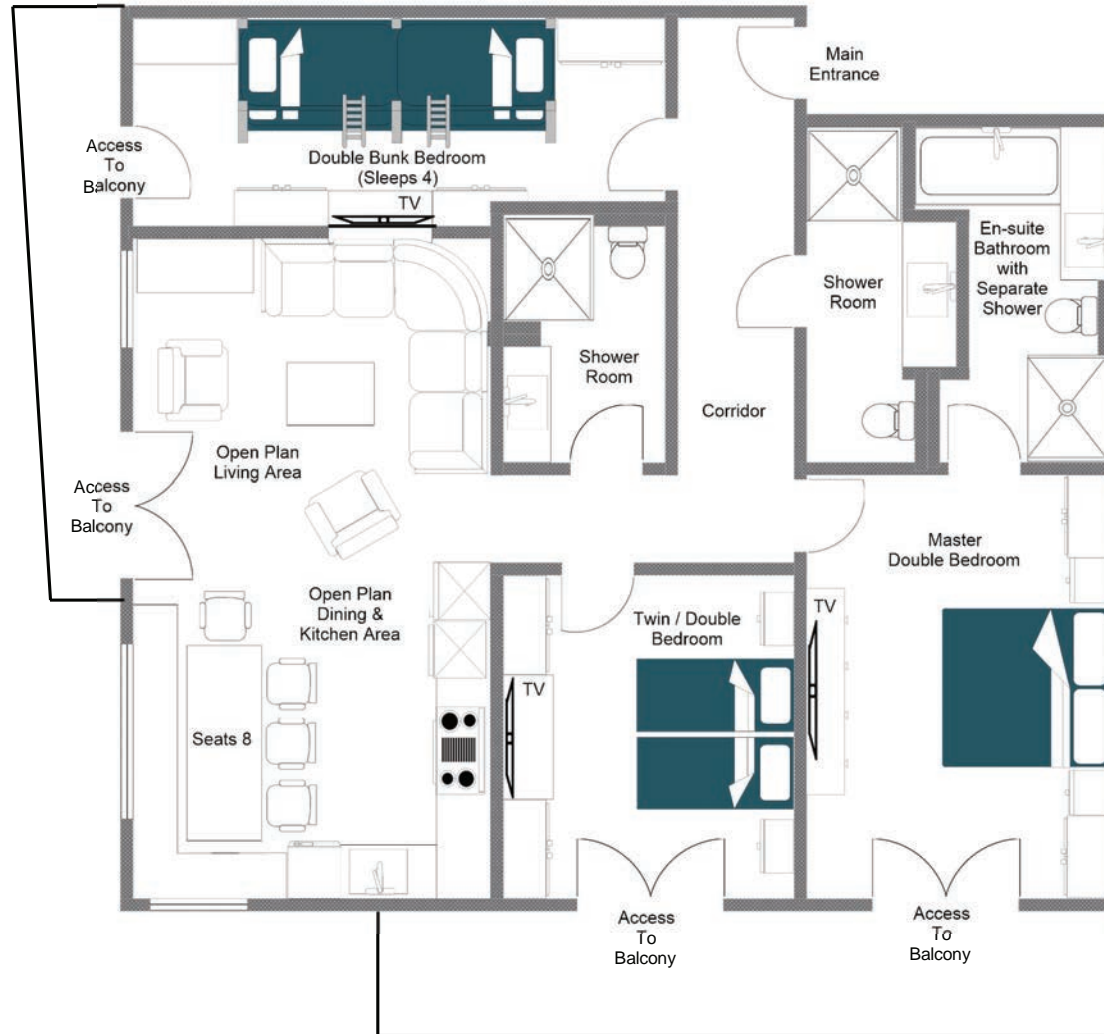
## FIRST FLOOR

- Open plan living, dining and kitchen
- 1 master bedroom (sleeps 2, en-suite bathroom)
- 1 twin/double bedroom (separate shower room)
- 1 bunk room (sleeping 4 children, separate shower room)



# FLOOR PLAN FIRST FLOOR

FOR ILLUSTRATION PURPOSES ONLY









LOCATION



#### ADDRESS

Lech, Austria

#### PROXIMITY

Schlosskopf chairlift - 6-minute walk

Schleggelkopf chairlift - 12-minute walk

Village centre - 10-minute walk or a 3-minute drive

#### GOOGLE CO-ORDINATES

47.215991 , 10.148279









