

BRUNNENHOF 3

AUSTRIA

LECH

BRUNNENHOF 3

LECH, AUSTRIA | Sleeps 6 | SPA



BRUNNENHOF 3, an exciting new apartment with luxurious shared facilities, ideally located close to the slopes.

DESCRIPTION



Brand new for 2019/20, the Brunnenhof residence is an exciting new addition to Lech's skyline. Home to 14 fabulous new apartments, the building has undergone a complete renovation and all aspects have been refurbished. The stunning new residence also boasts luxurious shared facilities including an indoor swimming pool, spa, hammam and sauna. Combined with Lech's incredible skiing and glamorous restaurant and social scene, the Brunnenhof residence is the ideal base for an unforgettable stay in Lech.

Brunnenhof 3 sleeps six guests in three stylish bedrooms all on one floor, and is located on the first floor of the residence. This chic new apartment is conveniently situated close to the centre of Lech, one of the world's most charming mountain villages, offering superb skiing and a sophisticated social scene. The apartment is only a short walk from the two-person Schloskopf chairlift, which takes skiers onto the slopes within minutes. With convenience and comfort prioritised, Brunnenhof 3 is the ideal ski base for a family or a group of friends.

The open plan kitchen, dining and living area is a fantastic space in which to relax and entertain. The style is contemporary with sleek and sophisticated furnishings however the décor pays homage to the area's fascinating mountaineering history through use of old photographs and tasteful displays of beautifully preserved ski equipment. The new and the old juxtaposed capture the best of both worlds. The living area seats up to six on a comfortable sofa and armchair arrangement. A large TV is mounted on a wide column which provides a degree of separation from the dining area, where an elegant table seats up to eight. An electric fireplace on this side of the column contributes to a soothing ambience in the dining space. There is a neat and well-equipped kitchen which

overlooks this area, a delight to prepare meals in on those evenings when you are not sampling Lech's exceptional choice of restaurants.

The master bedroom is a glorious, spacious room, which enjoys a lovely en-suite bathroom with separate shower, finished in tranquil earthy tones. Loads of light pours through large windows, warming the room and in particular, a gorgeous little living space with two armchairs. There are a further two generous double bedrooms, both with en-suite shower rooms, that are similarly designed to facilitate relaxation and restoration.

This stunning home, coupled with the residence's luxurious shared facilities, offers something for all guests.

If you are an experienced skier, you can ski back to the apartment, as it is located only a few hundred metres from the piste.

The apartment can be taken on a self-catered, BnB or accommodation only basis.

FACILITIES



INTERIOR

- Sleeps 6
- 145 Square metres
- 3 Bedrooms
- 5 Individual beds
- 3 Bathrooms
- 8 Dining table seats
- 6 Living area seats

APPLIANCES

- TV/DVD
- Wifi

WELLNESS AND RELAXATION

- Shared access to hammam
- Shared access to pool
- Shared access to sauna
- Spa

ADDITIONAL

- Cot/high chair available
- Shared ski locker
- Family-friendly chalets
- Indoor Parking: 0
- Outdoor Parking: 0



LAYOUT



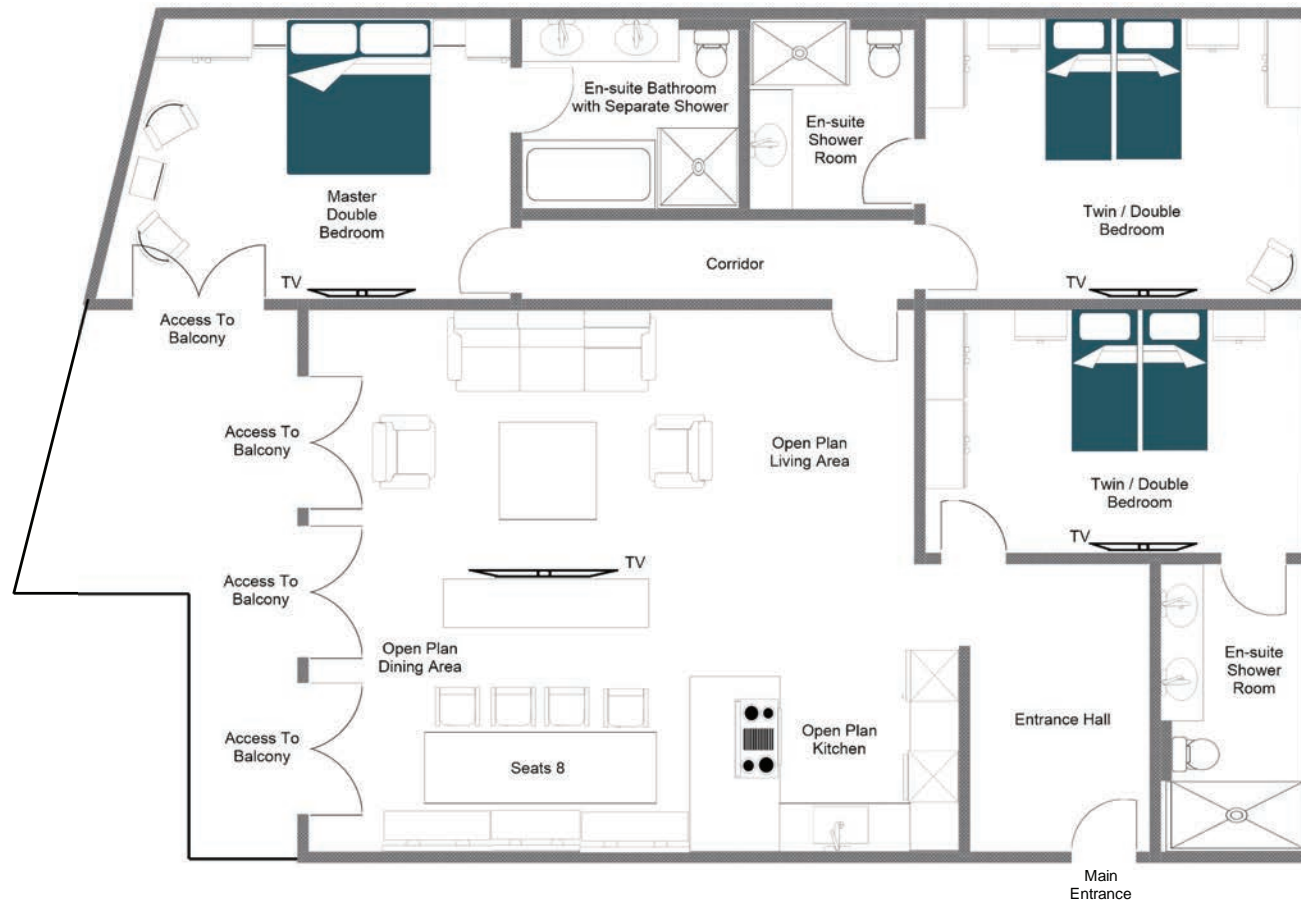
FIRST FLOOR

- Open plan kitchen, living and dining room
- 1 master bedroom (sleeps 2, en-suite bathroom, separate shower)
- 1 twin/double bedroom (en-suite shower room)
- 1 twin/double bedroom (en-suite shower room)



FLOOR PLAN FIRST FLOOR

FOR ILLUSTRATION PURPOSES ONLY









LOCATION



ADDRESS

Lech, Austria

PROXIMITY

Schlosskopf chairlift - 6-minute walk

Schleggelkopf chairlift - 12-minute walk

Village centre - 10-minute walk or a 3-minute drive

GOOGLE CO-ORDINATES

47.215991 , 10.148279







