

BRUNNENHOF 1

AUSTRIA

LECH

BRUNNENHOF 1

LECH | Sleeps 4 spa



A CHIC APARTMENT, completely renovated for the
2019/20 season

DESCRIPTION



Brand new for 2019/20, the Brunnenhof residence is an exciting new addition to Lech's skyline. Home to 14 fabulous new apartments, the building has undergone a complete renovation and all aspects have been refurbished paying exquisite attention to detail. The stunning new residence also boasts luxurious shared facilities including an indoor swimming pool, spa, hammam and sauna. In addition to Lech's incredible skiing and glamorous restaurant and social scene, the Brunnenhof residence is the ideal base for an unforgettable stay in Lech.

Brunnenhof 1 is a chic two-bedroom apartment, sleeping four guests. It is found on the ground floor of the impressive Brunnenhof Residence, which occupies an excellent location, very near to the heart of Lech, and just a short stroll to the nearest ski lift. Convenience and luxury combine effortlessly to make this apartment the ideal base for a small family or group of friends.

The open plan kitchen, living and dining area successfully marries stylish modern furnishings with traditional wooden floors and panelled walls. The living area seats up to six guests and is finished in cool blues and calming greys. The sensitive lighting creates a welcoming and tranquil ambience throughout. The dining table seats four comfortably. There is a large open plan kitchen, ideal for preparing meals in on the nights that you are not dining out.

The apartment has two beautiful bedrooms, which are decorated in calming earthy colours. The master bedroom has an en-suite bathroom with separate shower and the second double bedroom has an en-suite shower room. Both bedrooms boast fantastic mountain views through large paned windows and each is equipped with a television. There is also a separate guest WC on this floor.

The apartment is ideally located only a ten-minute walk from the centre of the village and a six-minute walk from the nearest lift, the two-man Schlosskopf chairlift, that will get you onto the slopes within minutes. If you are an experienced skier you can ski back to the apartment as it is located only a few hundred metres from the piste. The apartment has one parking space.

This Lech apartment can be taken on a self-catered, BnB or accommodation only basis.

FACILITIES



INTERIOR

- Sleeps 4
- 87 Square metres
- 2 Bedrooms
- 2 Individual beds
- 2 Bathrooms
- 1 Additional WCs
- 4 Dining table seats
- 6 Living area seats

APPLIANCES

- TV
- Sonos
- Wifi

WELLNESS AND RELAXATION

- Balcony
- Shared access to Hammam
- Shared access to pool
- Shared access to sauna
- Spa

ADDITIONAL

- Corporate chalets
- Cot/high chair available
- Family-friendly chalets
- Shared laundry facilities
- Shared ski locker



LAYOUT



GROUND FLOOR

- Open plan living, dining and kitchen
- 1 master double bedroom (sleeps 2, en-suite bathroom)
- 1 double bedroom (en-suite shower room)
- Guest WC

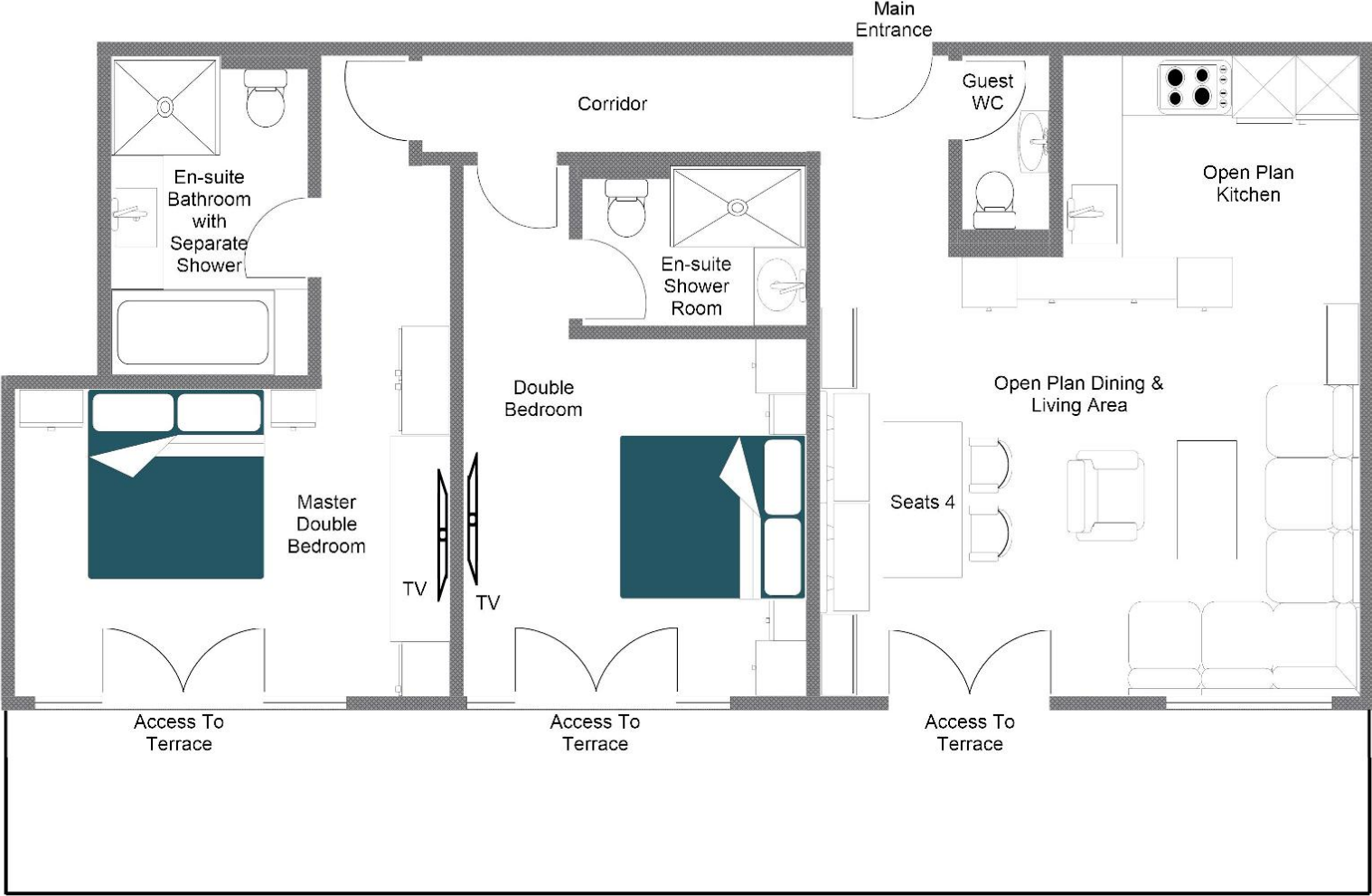




LOCATION



BRUNNENHOF APARTMENT 1, GROUND FLOOR APARTMENT
FOR ILLUSTRATION PURPOSES ONLY



Located just a short walk from the nearest ski lift and the centre of Lech, Brunnenhof 1 is ideally located for skiing and socialising.

PROXIMITY

Schlosskopf chairlift - 6-minute walk
Schleggelkopf chairlift - 12-minute walk

Village centre - 10-minute walk or a 3-minute drive

GOOGLE CO-ORDINATES

47.215991 , 10.148279







