

BALEGIA APARTMENT 3

AUSTRIA

LECH

BALEGIA APARTMENT 3

LECH | Sleeps 8



LOCATED INSIDE THE BRAND-NEW AND exclusive Balegia Residence, Balegia Apartment 3 enjoys a prime position, just a short stroll from the centre of Lech and only moments away from the lifts to the slopes. The closet ski lift, Schlosskopf, is only a 1-minute walk offering quick and easy access to the slopes on those mornings when you want to enjoy fresh tracks. The apartment itself sleeps eight people in four bedrooms. Designed with an eye for the alpine environment and fuss-free minimalist living, it is the finest example of a contemporary, luxurious finish. The perfect sanctuary for winding down and relaxing in after a day on the slopes.

DESCRIPTION



Located inside the brand-new and exclusive Balegia Residence, Balegia Apartment 3 enjoys a prime position, just a short stroll from the centre of Lech and only moments away from the lifts to the slopes. The closet ski lift, Schlosskopf, is only a 1-minute walk offering quick and easy access to the slopes on those mornings when you want to enjoy fresh tracks.

The apartment itself sleeps eight people in four bedrooms. Designed with an eye for the alpine environment and fuss-free minimalist living, it is the finest example of a contemporary, luxurious finish. The perfect sanctuary for winding down and relaxing in after a day on the slopes.

The master bedroom is embellished with some luxurious touches, including a private dressing room, elegant en-suite bath and shower room, sauna and access to a wonderful private balcony which enjoys captivating views of Lech and the surrounding mountains.

There are three further double bedrooms all with en-suite bathrooms and have the option of being made up as twins or doubles.

Each of the bedrooms have been individually designed. Care has been taken over their design to ensure that the colours, lighting and use of materials are in synergy with the alpine environment whilst maintaining an ultra-slick feel.

At the heart of the apartment you will find the open plan living and dining area. Features include a large plasma TV and wonderful integrated sound system. The fireplace is perfectly positioned in-between the floor to ceiling French windows with stunning views of Lech and the snow-capped peaks, giving the space an authentic alpine perspective.

Inviting sofas take up one half of the room whilst the other is adorned with a wonderful dining table accommodating the whole party with ease.

An intelligent use of space Balegia Apartment 3 which is an effortless winter base for a group of friends or for spending time with the family.

Guests have access to a shared ski room with heated boot warmers.

The luxury Lech chalet is sold on a catered or self-catered basis.

When taken on a catered basis, the food is prepared in the professional kitchen area in the lower floor of the property and then served by the hosts in the comfort of your own apartment.

The chalet normally has a shared driving service from 8:30am – 1:00am when sold on a fully catered basis.

FACILITIES



INTERIOR

- Sleeps 8
- 220 Square metres
- 4 Bedrooms
- 7 Individual beds
- 4 Bathrooms
- 1 Additional WCs
- 8 Dining table seats
- 8 Living area seats

APPLIANCES

- Apple TV
- TV
- Cable TV
- Hi-Fi/CD player/MP3 player
- Satellite
- Wifi

WELLNESS AND RELAXATION

- Sauna

ADDITIONAL

- Corporate chalets
- Cot/high chair available
- Family-friendly chalets
- Heated boot warmers
- Private laundry facilities
- Shared ski locker
- Indoor Parking: 1



LAYOUT



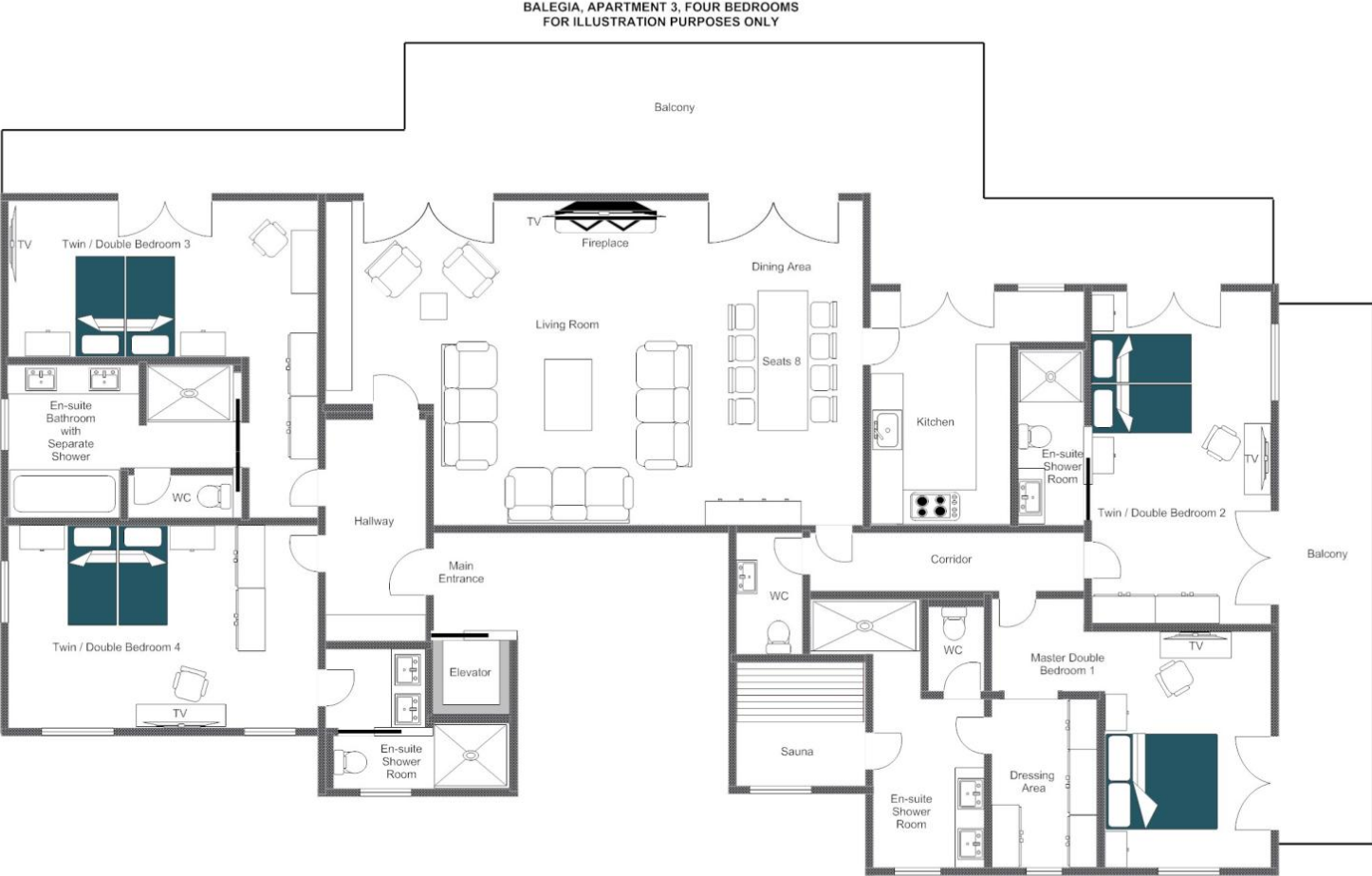
SECOND FLOOR

- Open plan living and dining area
- 1 master bedroom (TV, dressing area, en-suite shower room, sauna, terrace access)
- 1 twin/double (TV, en-suite shower room, terrace access)
- 1 twin/double (TV, en-suite bathroom with separate shower, terrace access)
- 1 twin/double (TV, en-suite shower room)
- Guest WC









LOCATION



PROXIMITY

Schlosskopf chairlift - 1-minute walk
Bergbahn Lech-Oberlech - 6-minute walk

Village centre - 10-minute walk or a 3-minute drive

GOOGLE CO-ORDINATES

47.211313, 10.147505





